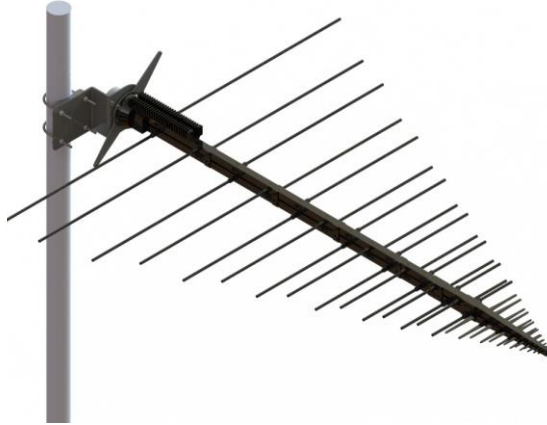


Wideband LPDA Antenna

100 – 3000 MHz

Product Code: LPDA-A0037

VERSION: 3.1



SPECIFICATIONS:

Electrical:	
Frequency range	100 – 3000 MHz
VSWR	< 2.5:1
Nominal input impedance	50 Ω
Connector	7/16 female
Feed power handling	500 W
Mechanical:	
Gain on horizon	6 dBi typical
E-plane 3 dB beamwidth	60° typical
H-plane 3 dB beamwidth	110° typical
Polarisation	Adjustable (vertical and horizontal)
Environmental: designed to meet the following specifications	
Temperature (operational)	- 30 °C to +65 °C
Wind survival on mast	160 km/h (calculated)
Water and dust resistance	IP 65

FEATURES:

- Low VSWR and high gain
- High feed power handling
- Vertical and horizontal polarisation
- Easy to assemble and disassemble
- Rugged construction

MECHANICAL FEATURES:

- Rugged
- Quick assembly time: under 10 minutes for two people
- Compact packaging

APPLICATIONS:

- Wideband monitoring
- High-power applications

PRODUCT DESCRIPTION:

The LPDA-A0037 is a directional log-periodic dipole array that covers the 100 to 3000 MHz frequency band.

High-powered unit of 500 W of power up to 1000 MHz with a typical gain of 6 dBi over 90% of the band.

Polarisation is adjustable between vertical and horizontal via a swivel mounting bracket.

This antenna can be customized for various frequencies within this frequency band with excellent gain, VSWR and high-power handling.

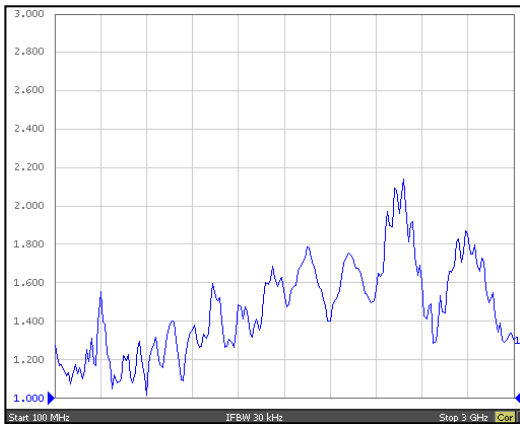
Wideband LPDA Antenna

100 – 3000 MHz

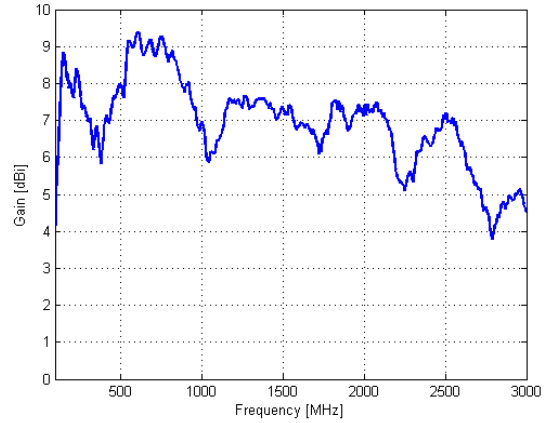
Product Code: LPDA-A0037

VERSION: 3.1

VSWR:

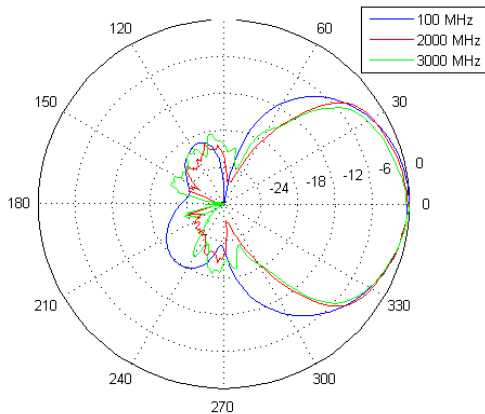


Gain:



PATTERNS:

E-plane:



H-plane:

